



In this issue:

- Complete and Occupied
- Discover Midway
- Orchids and Onions Award!
- Under Construction and Coming Soon

Complete and Occupied!

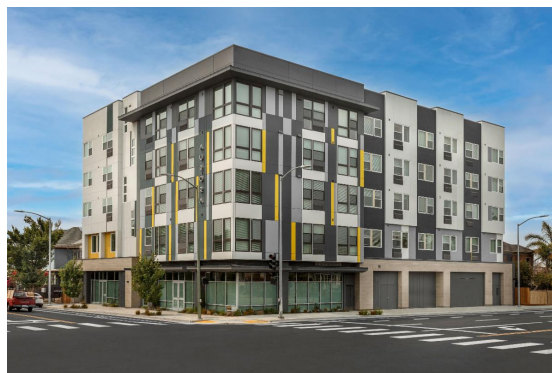


Nova, Oakland CA.

Nova is a modern, 6-story, 57 unit affordable housing development serving formerly homeless individuals in the City of Oakland. Located at 445 30th Street, Nova is a short walk away from high quality transit, groceries, and medical facilities. The project was funded by the City of Oakland, Oakland Housing Authority, Alameda County, Chase Bank, Red Stone Equity Partners, CDLAC, CTCAC, and the Federal Home Loan Bank of San Francisco. Congratulations to everyone involved! To view the property and hear comments from some of those involved, click [here](#).

Aurora, Oakland CA.

Aurora offers 44 affordable apartments for formerly homeless individuals. The 5-story building offers residents in-house services via [Bay Area Community Services](#). Located in the medical district of Oakland, Aurora is conveniently located in proximity to public transit, and other resources. Fully occupied, the new community is made possible by the City of Oakland, County of Alameda, and JP Morgan Chase. Aurora is an award worthy development designed by Dahlin Group. To view the property and hear from some of the key persons involved, click [here](#).



Discover Midway for San Diego



AFFIRMED HOUSING + ASM GLOBAL + BROOKFIELD PROPERTIES + NATIONAL CORE

We have teamed up with Brookfield Properties, ASM Global, and National CORE on this major redevelopment effort! Brookfield is the largest real estate developer in the USA and ASM Global manages more entertainment venues that anyone in the world. As an award-winning San Diego based affordable housing developer, we are excited for this opportunity to create more, much-needed affordable housing in San Diego.

"The Sports Arena site is a once-in-a-generation opportunity to add to the fabric of what makes San Diego a special place for all," said Jimmy Silverwood, Executive Vice President at Affirmed Housing. "Our team, backed by experience and resources, is ready to further aid in addressing our region's housing crisis and creating far-reaching community benefits that can be celebrated for years to come."

Discover Midway is led by affordable housing, sports and entertainment venue and mixed-use development experts including [Affirmed Housing](#), [ASM Global](#), [Brookfield Properties](#) and [National CORE](#).

Learn More @ [DiscoverMidway](#)

The San Diego Architectural Foundation Orchids and Onions Awards

"The 7-story affordable housing project at 17th and G in Downtown San Diego's East Village provides 72 permanent supportive housing units for persons earning below 40% area median income (AMI) and 14 affordable units for persons earning below 50% of the area median income. The project, dubbed "The LINK," exemplifies a vision of creating housing enriched with support resources – a special place that can link its formerly homeless residents with the help they need to survive and thrive.

The building design concept serves to connect residents and neighbors in the surrounding community. Jewel box-like shared-use amenity spaces and outdoor courtyards at street and podium level offer high visibility from the outside in and inside out, welcoming the community into the space and allowing The LINK residents to feel a sense of connection with the community. Generous common areas include two outdoor terraces, a spacious community room, numerous supportive services offices, and public art."

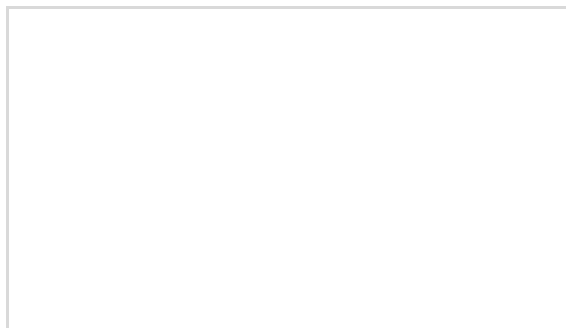
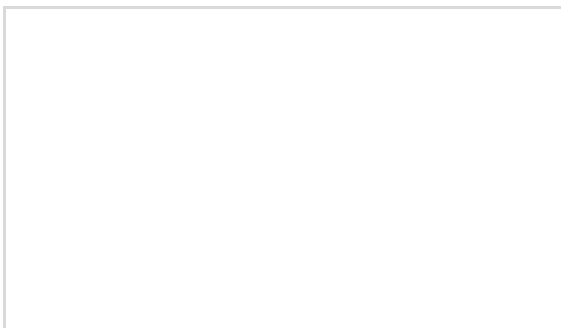
Congratulations to everyone involved in this award winning development! And special shout out to architect Carrier Johnson + Culture and Affirmed Housing's Director of Design, Yvonne DeCarlo on their award winning work!

To learn more about the Orchids and Onions Awards [click here](#)



Under Construction and Coming Soon!

As Covid-19 rules and regulations continue to ebb and flow, the Affirmed team remains strong and steadfast, building an unprecedented pipeline of innovative affordable housing. Setting new in-house records for financial awards and development production, the team continues to raise the firm's standards.





Emerson - Los Angeles

Supportive Housing offering 39 studio apartments for formerly homeless Veterans.



Dahlia - Los Angeles

Supportive Housing offering 56 studio and one-bedroom apartments for those of extremely low income.



The Helm- San Diego

78 affordable housing studios for those who earn 30%-80% AMI (area median income).



The Orchard at Hilltop- San Diego

Multifamily housing offering 113 studio, one-, two-, three- & four-bedroom apartments to those who earn 30%-60% AMI.



Vela - San Jose

Offering 87 studio, one-, two-, and three-bedroom apartments for those who earn 30%-60% AMI.



Windsor Pointe- Carlsbad

Supportive housing & affordable housing offering 50 studio, one-, two-, and three-bedroom apartments for Veterans and their families, earning 30-60% AMI.



Westhaven - Los Angeles

Supportive housing offering 57 studio apartment homes for formerly homeless with a portion of the project serving those with serious mental illness through the No Place Like Home Program.

**Alora - San Marcos**

Multifamily housing offering 100 one-, two-, and three-bedroom apartments for those who earn 30%-80% AML.

Asante - Los Angeles

Supportive housing offering 55 studio units for formerly homeless Seniors. Asante is partially funded via HHH program in Los Angeles.

And coming very soon...

- The Iris in Los Angeles
- Shore Line in San Diego
- Tizon in San Diego
- Lumina in Los Angeles
- The Remi in Los Angeles
- Vitalia in San Jose

Special shout out to everyone involved in the new transit oriented development **Shore Line**, recent **WINNER** of Circulate San Diego award for Healthy Community. The new mixed use community will offer 250 residential units. Thank you to everyone involved including our partners [Greystar](#) and [MTS](#). To learn more, visit the [Circulate San Diego](#) website.

Many thanks to everyone involved in these new developments!

Interested in affordable housing? Click [here](#) to visit our website.

Let's Build Some Housing!

Southern California, jeff@affirmedhousing.com

Northern California, rob@affirmedhousing.com

Headquartered in San Diego, California, Affirmed Housing is dedicated to improving and sustaining the viability of California through the development of affordable housing. The company aims at enhancing communities and our environment by building dynamic, professionally-managed, high-quality, green multifamily housing.

STAY CONNECTED!

