

Happy Fall Y'All! =)

Affirmed Housing News



In this issue...

- Coordinated Entry System sign up event
- Building, building, building...under construction and coming soon!
- 1st Annual Scholarship Awards
- Company wide workout competition



San Diego's first, homeless lease up event

Lease up of Supportive Housing can be a rather lengthy and confusing process, so to mitigate this issue our own **Heather Pollock**, initiated the first Coordinated Entry System lease up event in San Diego. Held in downtown San Diego, our team worked with [Interfaith Housing](#), the [Regional Taskforce on the Homeless](#) (RTFH), and the [San Diego Housing Commission](#) (SDHC) to create a "lease up" event for Stella. This was a one stop lease up event that helped alleviate difficulty and streamline the lease up process. Stella is located in Grantville SD. and offers 80 studio and one bedroom apartments as well as services for residents provided by Interfaith Housing and the [VA](#). This successful event has paved the way for a swift lease up of the new community, and has enabled formerly homeless individuals to move into their new home! A big thank you to

our partners who made this event possible, as well as multiple service providers in the community, and [Cox Communication](#) for sponsoring lunch for the event attendees.



Stella in Grantville, San Diego is now complete and nearing 100% occupancy due to the dedication of our team and partners. Offering 80 studio and one-bedroom apartments, Stella is a six story development, designed by [Studio E Architects](#). The new community boasts numerous indoor and outdoor gathering areas for residents and service providers. Our development team includes [Suffolk Construction](#), [FormWork Landscape Architects](#), and [Kettler Leweck Engineering](#). Funding sources include [Boston Capital](#), [US Bank](#), [CCRC](#), [San Diego Housing Commission](#), and AHP funding.



Building, Building, Building....

As the need for homeless housing persists throughout the state, Affirmed does its part to develop and build housing for those most in need.

Aria, located in downtown Los Angeles, will offer 57 studio and one-bedroom homes for the formerly homeless in a five story building. Located on a .43 acre site, [Homeless Healthcare of Los Angeles](#) will be the on-site service provider. Development team includes [Togawa Smith Martin](#), [Fusco](#), [EPT Design](#), [Donald F. Dickerson Associates](#) and [Walton Construction](#). Funding sources include [Banner Bank](#), [Boston Capital](#) and HHH funds via the [City of Los Angeles](#). Aria will be completed in summer, 2020.



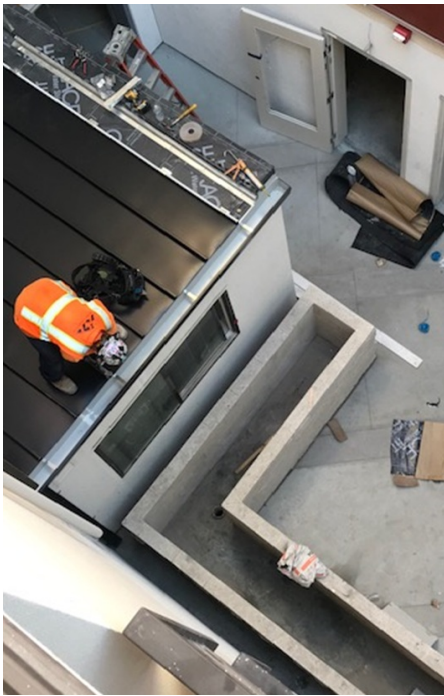
The Link is located in downtown San Diego at the corner of 17th street and G street. To offer 88 permanent supportive and workforce housing units, the attractive seven story development has been designed by [Carrier Johnson + Culture](#) and will create a dramatic presence at the active highway on-ramp intersection. The building and design team include [HA Builders](#), [Kettler Leweck](#) and [Form/work landscape design](#). Funding is provided by [Bank of America Merrill Lynch](#), [Civic San Diego](#) and [San Diego Housing Commission](#). The Link will be completed in winter of 2020.



Della Rosa is located in Westminster, CA and will offer 50 studio, one, and two-bedroom supportive affordable housing apartments for those who earn between 30% and 50% of the County of Orange's AMI. The three story building is located on .66 acres and is being built by [HA Builders](#). To be completed in fall 2020, on site services will be offered by [American Family Housing](#). Other team members include Architect [Dahlin Group](#), [Fuscoe Engineering](#), and [MJS Design Group](#). Funding sources include the [City of Westminster](#), [Orange County Housing Authority](#), [HUD](#), [US Bank](#), and [CCRC](#).



Villas on the Park is located in downtown San Jose, CA and is the product of a partnership between Affirmed Housing and [PATH Ventures](#). The property is expected to begin lease up in approximately one month. Supportive housing, Villas on the Park will offer 84 apartments as well as enhanced services for residents. The six story, sleek structure is designed by [Dahlin Group](#) and is being built by [Brown Construction](#). Other development team members include [BFK](#) and [Jett Landscape Design](#). Funding sources include [Bank of America Merrill Lynch](#), [CCRC](#), [City of San Jose](#) and the county of [Santa Clara](#).



If you, or someone you know is experiencing homelessness, please visit our website which has information regarding wait lists for our future supportive housing communities. [Click here](#)

Whats next?

Aurora in Oakland, CA will offer 44 supportive housing units for the formerly homeless. This project will begin December 2019.

Nova in Oakland, CA will offer 57 supportive housing units and is set to begin construction December 2019.

Emerson in Los Angeles, CA will offer 39 supportive housing units for formerly homeless Veterans. This new development is set to begin by February 2020.

First Annual Scholarship Award!

This year marks the First Annual Scholarship Awards by Affirmed. Those eligible for an award include all residents of Affirmed properties who are currently enrolled in school.

Totaling \$20,000.00 in awards, two residents won \$5,000.00 each and four were awarded \$2,500.00. A stiff competition, the awards committee, chaired by Michelle Muniz, was left with the difficult decision of awarding just 6 out of all the worthy applicants. Thank you again to everyone who applied, we look forward to making this an annual event.



Affirmed hosts company wide health competition

In conjunction with health competitions hosted by office management [Kilroy Realty](#) and fitness center [REV Fitness](#), Affirmed hosted its own, in office competition re: weight loss, muscle mass gain, and the campus wide fitness challenge hosted by REV. Everyone in the office put in hard work, making it a stiff competition! In the end, those who prevailed were:



Brendon Bergen for most increase in SMM (Skeletal Muscle Mass), **Ruren Clemente** for most decrease in PBF (Percentage Body Fat), and



Erwin Pagtaconan for most points won in the [REV](#) fitness challenge. Each was rewarded with a \$500.00 gift card, a shiny medal, and of course, bragging rights. The competition allowed for some good natured teasing, challenging, and over all fun.

Congratulations to you three!



Interested in affordable housing? Visit our website for housing opportunities, [click here](#).

Let's Build Some Housing!

Contact our Director of Acquisitions, jeff@affirmedhousing.com

Headquartered in San Diego CA, Affirmed Housing is dedicated to improving and sustaining the viability of California through the development of affordable housing. The company aims at enhancing communities and our environment by building dynamic, professionally-managed, high-quality, green multifamily housing.

STAY CONNECTED:

